

# HARMS WENDE WELD TIMES

Newsletter for friends and business partners of Harms & Wende GmbH & Co. KG, Hamburg (Germany)

## Editorial

Dear Reader,  
one more year has passed by since I started writing the last issue of the Weld Times. This time the newsletter has been created while I was on the road at many different places and shall reflect our activities around the globe. It is not just me it's the work of many great people at our partners and at Harms & Wende which makes all this possible.

We have accomplished success with our aluminum mode which is in focus in different countries. It's well-received as it fulfills customerers' requirements. For that reason we have extended our lab with two servo driven weld guns to get more experienced in this field for your benefit.

At the company we have worked very hard to extend our capacities with many small and bigger steps. There are more people working in Hamburg than ever – human resources are our greatest capital. All machines will stop working without them. As a sales person it's very good to know to have a strong and enthusiastic crew behind you.  
Feels very good.



Yours  
Jörg Eggers

Jörg Eggers  
Export Manager  
joerg.eggers@harms-wende.de

## Harms & Wende in China

... opens its doors.

Ralf Bothfeld  
ralf.bothfeld@harms-wende.de

Starting end of 2014 we are proud to announce that our subsidiary Harms & Wende in China will be available for our Chinese customers. Opening our own branch in Beijing we set a clear commitment for our Chinese customers: We are close by your side!

Harms & Wende in China is responsible for industrial sales and service for this customer group. Our partner SNG keeps track of the automotive sector. Since our office is located in the same building as SNG, we use the synergies from both companies.



Forbidden City

Our staff has undergone a six month intense training on our systems for your benefit. For your advantage they speak English and German as well. As strong link to China we have Chinese speaking staff in Hamburg as well.

## Production extension & optimization

... big demand requires larger production.



Production of inverter

More than 25 years ago we moved into our todays building in Hamburg-Harburg. Many changes have taken place in the building and our production boomed under the entire 2014 and we see no end of it. For our customers' advantage we are extending our production, again! On one side of the building we have panel production since two years in external containers

and additional containers to store supplies. Now we need even more space and extend our inverter

production speed. Employees come with ideas how to slim production and to take steps to be better. It's not only to eliminate hardware, but also to eliminate production steps. We always ask the question: "For what reason we do this? Is there a way to do it better?"



Test cell

production, again. After installing a new SMG machine, extending test places and final assembly work places, we will build an additional hall beyond our main building. Internally we are optimizing our product structure to increase the

Simpler work flow decreases the failure rate as well as job rotation. All these are actions we take to get better every day.

Your confidence in our systems made all this possible! We keep on working for you, every day!

Frank Jürs  
frank.juers@harms-wende.de

# Welding & Cutting 2014



Largest welding fair in China – this year in Beijing.

As reader of the Weld Times you know that we participate in the Beijing Welding & Cutting every year for many years.

Our partner SNG organized a great booth where we put hands on after arrival in Beijing. The new exhibition

center close by the Capital Airport is a great place for such events.

In contrast to the past this year our team from Hamburg participated with three employees (two Chinese colleagues and I).

Now with Chinese language capabilities we are able to serve our customers better. This has shown in many aspects during meetings in our booth.

This year we have displayed industrial and automotive timers or panels to

show the range of products we offer. They were very well received.

This exhibition was the kick-off for our Chinese staff which will be located in Beijing. We could make many personal introductions and build the first links to customers.



Our booth



Meeting customers

Since the Chinese market is very important to us, we certainly return in 2015! See you again in Shanghai next year!

## From the markets

News from different markets.

### China

As our reader of the Weld Times we have reported many times about activities in China. Also the recent year we could get many additional projects and have the pleasure to supply our customers with our technology. Companies as for example Geely and Foton as local automotive markets.

As our commitment to China, we are starting our new company in Beijing. HWH in China will be located in the same building in Beijing as SNG. With this important step we want to show our customers the importance of the market to our company. Please read more in a separate article.



### United States

The United States markets are in our focus the recent years and the great response from customers shows us that we are on the right track. In the previous issue our partner Coldwater machine (Coldwater OH) released an article about their capabilities and perspectives in the friction-welding range. I now describe in this issue how it works for our automotive customers.



#### Automotive market for resistance welding

Alliance Engineered Solutions - Sales is our customer for the automotive resistance welding market. Alliance is a solution provider bringing many different systems under one roof to

provide a solution. With our resistance welding systems we are the exclusive partner of Alliance. Alliance Sales is located in the North of Detroit in Troy Mi. Your contact person is Mr. Dennis DaSilva. You can find his contact data on our homepage under contact, HWH worldwide.

#### Stegner Controls - Support

works hand in hand with Alliance and is our complete solution provider. It starts from quotations for solutions, trainings, technical support to panel building. Stegner also holds components for quick backup of our customers. With many years in business in automotive we have found a partner with great experience.



At Stegner Controls we have established a weld lab with Genius inverters and a powerful weld gun suitable

for steel and aluminum welds as well. Please find also the contact details on our web site.

#### Industrial solutions for resistance welding

##### Huys Industries

Huys is our partner for industrial solutions for many years for the US and Canada market. Huys is known for his copper product and very good knowledge in resistance welding.



For Harms & Wende Huys covers the complete sales and service for its industrial customers as well as repairs for the US and Canadian market. Please find all relevant details on our website.

# Welding systems

## XPegasus and friction spot system RPS updated.

### XPegasus 4.0

The new version of our programming software for the HWH inverter series Genius and HWI. Following the version 3.2 we now released the new version 4 of our XPegasus. From the jump in the version number you may estimate that there came in more changes.

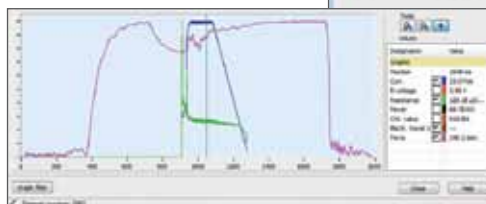
XPegasus is of course backwards compatible to previous versions and just required Windows XP or newer to operate.

The new main feature is the ZUP support for our prototype systems. These ZUP systems allow connecting up to eight weld guns to one inverter

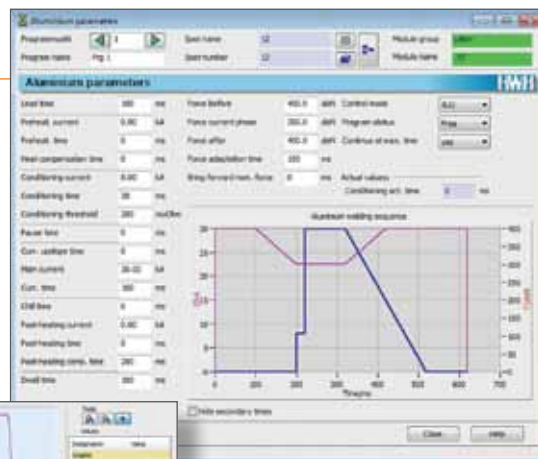
and up to eight weld schedules per weld gun. As additional function we implemented a function where the user can now change the regulation speed of the inverter. The reason is that there are some transformers struggling with the fast upslope of our inverter to the set value.

Parallel programming of units. The user can now put his weld schedule data in an Excel file grouped by inverter.

XPegasus is identifying each inverter and automatically loads the data to the inverter.



This makes programming of large systems very fast. Users with spot



Alu Mode

table enjoy a new function. By clicking on the spot they simply jump to the related weld schedule. This is much faster than manually looking up the schedule.

### XPegasus is available in three different setups depending on your requirements:

XPegasus	Silver	Standard version for programming of one or more units in a network
XPegasus	Gold	As Silver version but with large database and extended monitoring functions
XPegasus	Platinum	Includes the Gold version plus a server-client application for larger networking solutions



### Friction Spot welding system RPS 101

To extend the usage of our friction spot welding system we now released a very compact welding head. The auxiliary and main drive has been placed in

different positions making the head very small. This enables that the welds in narrow places can be made. Additionally the stroke is now also servo driven. This fourth drive makes it possible to program any possible

stroke. The intuitive user interface makes it very simple to use. It's very similar to the previous version with pneumatical stroke.



## GeniusMFI / GeniusHWI

... our flagships for automotive and industrial use.

Our GeniusMFI models are now available in the market and have been installed around the globe in thousands of units. It has shown its robustness from cold to very hot environment in India.

The inverter runs from 400 to 480 V mains supply without changing any hardware components. Identical on GeniusMFI and GeniusHWI is the plug-and-play function between field bus boards. This works with any fieldbus board without additional hard wired IOs on. Customers using different field bus

systems can reduce the number of spares on the shelf.

The GeniusHWI is available in a wide power range from 400 to 3500 A. Additionally up to eight inverters can be connected to a Master-Slave-System. A Master-Slave-System is the amplified system of multiple inverters

to get more power. On request of many users we implemented the internal weld schedule selection. On all previous versions the schedule selection was only possible by IO or field bus selection. To be able to use this function XPegasus 4.0 or higher is required.

# Automation with Sinius and Varius

Experiences from the market.



could only be used by those customers who programmed the PLC software and the user interface itself. Nevertheless, the controls were in high demand.

Five years ago we had the idea of a new controller family that is completely integrated into an automation application. The new controller family

Today we offer a construction set. The customer has the possibility to select the required functions from this set. For example: Welding processor for AC,

MFDC-, RF power stages; special welding functions such as projection welding, seam welding and others; user interfaces. If necessary, the customers can modify the modules by themselves.

Finally, the software modules are included in the complete automation software. Now the machine can put into operation.

Horst-Uwe Siemßen  
uwe.siemssen@harms-wende.de

## Hamburg Dom



When you come to our city you wonder what

you can do? One traditional event is the Hamburg Dom. Actually this has a double meaning. A dome is a major church as the „Kölner Dom“ (Cologne Cathedral).

The old dome or formerly „Mariendom“ was torn down in 1805 at the Heiligengeistfeld and never replaced by a new one. Today, at the Heiligengeistfeld is a major event, called the „Dom“. It opens its doors three times a year, in spring, summer and winter. Families enjoy it from the afternoon to night for about four weeks per event. The tradition of this event does back to the time where the dome was still existing. If you'd like to learn more about it please visit:

<http://www.hamburg.de/dom/>

## Sinius weld processor series

... is the way to integrated automation.

As you may have noticed our Sinius timer series has many different names. Weld processor. Why? The reason is very simple: The timer does communicate directly to the PLC through a field bus system as a Profi-

net, Profibus, Ethercat or similar. There is no graphical interface coming from HWH rather the user defines his own. This opens great opportunities for following



SiniusHWI

the CI line or not to be comparable with your competition. Sinius is available as AC and MF system.



We miss you ....

With great sadness we are announcing that our dear colleague and good friend Detlev Hopp has passed away way too soon.

Many of our customers knew him as a trustful and hard working employee of our company. He started his career at Harms & Wende in 1985 as trainee and stayed here, with the exception of a short intermission. He became deputy manager of the application technology in 2008 and afterwards the head of the service department in 2011.

All our thoughts are with his wife Dörte and his family. Detlev, we miss you every single day!



### Imprint

Issue 7

**Publisher:**  
Harms & Wende  
GmbH & Co. KG  
Grossmoorkehre 9  
21079 Hamburg (Germany)  
Tel.: +49 (40) / 76 69 04 - 0  
Fax: +49 (40) / 76 69 04 - 88  
[www.harms-wende.de](http://www.harms-wende.de)

**Publishing Company:**  
Agentur v. Ruckteschell  
Manhagener Allee 100  
22926 Ahrensburg (Germany)  
Tel.: +49 (4102) / 70 730 - 0  
[www.katalogkompetenz.de](http://www.katalogkompetenz.de)

## Events & fairs 2014/2015

2014

- Aluminium Düsseldorf, Oktober 7<sup>th</sup> to 9<sup>th</sup> 2014
- EuroBLECH Hanover, Oktober 21<sup>st</sup> to 25<sup>th</sup> 2014

2015

- International Workshop (HWH Hamburg), April 2015

## Your Harms & Wende partner

All articles by Jörg Eggers if not indicated otherwise. Email: [joerg.eggert@harms-wende.de](mailto:joerg.eggert@harms-wende.de)

